

Wavin

Pricelist PEX-0626

(USA)

June 2026, Supercedes PEX-1225



Pex Pipe System

Potable and Hydronic



Pex Pipe System

Potable and Hydronic

- Potable
- Hydronic
- Fittings
- Tools
- Pipe hangers



Contents

Potable	04
SuperPEX resistant potable water pipe	04
BowPEX mono layer natural colored pex pipe	05
Pex Potable Water Tubing with Trace Wire	05
Hydronic	06
OxyPex oxygen barrier radiant heating pipe	06
OxyPert temp resistant hydronic heating pipe	07
Fittings	08
Polyalloy Insert Fittings	08
No-Lead Brass Fittings	09
No-Lead Stops & Valves	10
Copper Elbows and Manifolds	11
Rings & Sleeves	11
Tools	12
Pipe Hangers	13
Conditions of Sale	14
Warranty	15

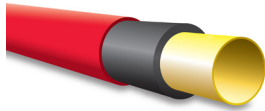
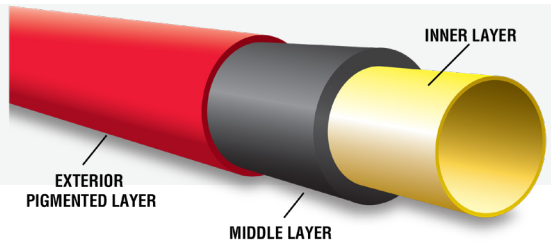
SuperPEX



PRESSURE SYSTEM:
100 PSI @ 82°C (180°F)
160 PSI @ 23°C (73°F)

ASTM F876/F877
AWWA C904 (1/2" and above)
CSA B137.5

Highest Chlorine Resistance



Lengths

Dimension Nominal	Dimension O.D.	Cold/Hot White	Cold Blue	Hot Red	Lengths	QTY/PKG	QTY Crate	Price Per 100'
1/2"	.625	588699	587774	587782	10'	250'	10,000'	259.77
		588707	589663	589903	20'	500'	20,000'	259.77
3/4"	.875	588780	587790	587808	10'	100'	5,000'	469.51
		588798	589671	589911	20'	200'	10,000'	469.51
1"	1.125	587147	587402	587741	20'	100'	5,500'	805.53

SmartCoil



SmartCOil™

Saves time, ensures precision! SmartCoil packaging allows you to pull the desired length of the pipe while keeping the rest wound and wrapped for future use!

Dimension Nominal	Dimension O.D.	Cold/Hot White	Cold Blue	Hot Red	Coils	QTY/PKG	QTY Pallet	Price Per 100'
1/2"	.625	588855	589705	589804	100'	100'	5,000'	259.77
		588863	589713	589812	250'	250'	7,500'	259.77
		588871	589721	589820	300'	300'	9,000'	259.77
		588889	589739	589838	500'	500'	6,000'	259.77
		588897	589747	589846	1000'	1000'	8,000'	259.77
3/4"	.875	588939	589754	589853	100'	100'	4,000'	469.51
		588947	589762	589861	250'	250'	3,750'	469.51
		588954	589770	589879	300'	300'	4,500'	469.51
		588962	589788	589887	500'	500'	4,000'	469.51
		588970	589929	589937	1000'	1000'	5,000'	469.51
1"	1.125	587154	587717	587758	100'	100'	3,000'	805.53
		587162	587733	587766	300'	300'	2,400'	805.53
		587170	587956		500'	500'	2,500'	805.53

Potable

BowPEX



Mono Layer Natural Colored Pex Pipe

- ⌚ For hot and cold water distribution
- ⌚ Chlorine resistant
- ⌚ Joints can be made with crimp rings or BOW's stainless steel press sleeves
- ⌚ Lead free

CSA B137.5
ASTM F876/F877

SmartCoil™



SmartCoil™

SmartCoil

Dimension Nominal	Dimension O.D.	Item	Coils	QTY/PKG	QTY Pallet	Price Per 100'
1/8"	.250	580241	500'	500	25,000	118.77
1/4"	.375	588376	100'	100	8,000	169.01

Bow SuperPEX



Pex Potable Water Tubing With Tracer Wire

Suitable for direct burial in the ground to facilitate the detection and tracing of underground pipe systems.

CSA B137.5
ASTM F876
AWWA C904

SmartCoil™



SmartCoil™

SmartCoil (Blue) 14 GAUGE

Dimension Nominal	Dimension O.D.	Item	Coils	QTY/PKG	QTY Pallet	Price Per 100'
3/4"	.875	586941	60'	60'	1800	600.47
3/4"	.875	586958	75'	75'	2250	600.47
1"	1.125	586966	60'	60'	2400	875.51
1"	1.125	586974	75'	75'	3000	875.51
1"	1.125	586917	100'	100'	3000	875.51

OxyPex

Barrier Pex Tubing (Red)



PRESSURE SYSTEM:
100 PSI @ 82°C (180°F)
160 PSI @ 23°C (73°F)

ASTM F876/F877
DIN 4726
CSA B137.5

SmartCOil™



Lengths

Dimension Nominal	Dimension O.D.	Item	Lengths	QTY/PKG	QTY Crate	Price Per 100'
1/2"	.625	588764	20'	500'	20,000'	357.19
3/4"	.875	588772	20'	200'	10,000'	509.45
1"	1.125	587378	20'	100'	5,500'	1,098.93

SmartCoil



SmartCOil™

Dimension Nominal	Dimension O.D.	Item	Coils	QTY/PKG	QTY Pallet	Price Per 100'
3/8"	.500	587923	100'	100'	5,000'	283.03
		587246	300'	300'	12,000'	283.03
		587253	500'	500'	7,500'	283.03
		587261	1000'	1000'	10,000'	283.03
1/2"	.625	589978	100'	100'	5,000'	357.19
		587410	300'	300'	9,000'	357.19
		588475	500'	500'	6,000'	357.19
		588145	1000'	1000'	8,000'	357.19
		587816	1200'	1200'	8,400'	357.19
5/8"	.750	587931	100'	100'	4,000'	413.81
		587279	300'	300'	4,500'	413.81
		587287	400'	400'	4,800'	413.81
		587295	500'	500'	5,000'	413.81
		587303	1000'	1000'	5,000'	413.81
3/4"	.875	587964	100'	100'	4,000'	509.45
		587949	300'	300'	4,500'	509.45
		588483	500'	500'	4,000'	509.45
		588251	1000'	1000'	5,000'	509.45
1"	1.125	587477	100'	100'	3,000'	1,098.93
		587188	300'	300'	2,400'	1,098.93
		587386	500'	500'	2,500'	1,098.93

Polyalloy Fittings

ASTM F2159

For Use With SuperPEX Pipe



Tee

(Barb x Barb x Barb)

Dimension	Item	STD/ PACK	Carton	List Price
1/2"	503102	25	250	2.48
1/2" x 1/2" x 3/4"	503169	25	250	3.60
3/4"	503110	25	250	3.60
3/4" x 1/2" x 1/2"	503177	25	250	3.60
3/4" x 1/2" x 3/4"	503185	25	250	3.98
3/4" x 3/4" x 1/2"	503193	25	250	3.60
1"	503201	10	100	9.20
1" x 3/4" x 3/4"	503227	10	100	8.30
1" x 1" x 1/2"	503235	10	100	8.30
1" x 1" x 3/4"	503219	10	100	8.15



Male Adapter

(Pex x MPT)

Dimension	Item	STD/ PACK	Carton	List Price
1/2"	503045	25	250	4.36
1/2" x 3/4"	503078	25	250	5.08
3/4"	503052	25	250	5.59
3/4" x 1/2"	503086	25	250	5.08



Female Faucet Adapter

(Swivel x NPSM)

Dimension	Item	STD/ PACK	Carton	List Price
1/2"	503060	25	250	7.69



90° Elbow

(Barb x Barb)

Dimension	Item	STD/ PACK	Carton	List Price
1/2"	503300	25	250	1.63
3/4"	503318	25	250	3.13
3/4" x 1/2"	503367	25	250	3.45
1"	503375	10	100	6.98



Coupling

(Barb x Barb)

Dimension	Item	STD/ PACK	Carton	List Price
1/2"	503011	25	250	1.37
3/4"	503029	25	250	2.09
3/4" x 1/2"	503037	25	250	1.96
1"	503458	10	100	3.72
1" x 3/4"	503466	10	100	4.57



Plug

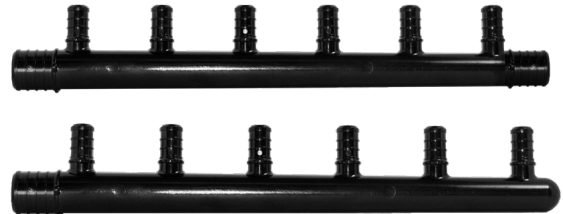
(Barb)

Dimension	Item	STD/ PACK	Carton	List Price
1/2"	503409	25	250	1.05
3/4"	503417	25	250	1.57
1"	503425	10	100	2.87

Polyalloy Manifolds No Lead

For PEX Plumbing and Heating Systems. High impact and corrosion resistant (NSF Approved).

Branches	Dimension	Item	STD/ PACK	CTN	List Price
2 (1/2")	3/4" Barb Closed End	503474	5	150	11.95
3 (1/2")	3/4" Barb Closed End	503482	5	90	15.32
4 (1/2")	3/4" Barb Closed End	503490	5	60	20.61
6 (1/2")	1" Barb Closed End	503508	5	30	27.33
2 (1/2")	3/4" x 3/4" Barb Open End	503516	5	150	12.40
3 (1/2")	3/4" x 3/4" Barb Open End	503524	5	90	16.70
4 (1/2")	3/4" x 3/4" Barb Open End	503532	5	60	21.34
6 (1/2")	3/4" x 3/4" Barb Open End	503540	5	30	24.05



No Lead Brass Fittings

Tee

(Barb x Barb x Barb)



Dimension	Item	STD/ PACK	Carton	List Price
1/2"	524439	25	250	5.24
1/2" x 1/2" x 3/4"	524447	25	250	8.25
3/4"	524454	25	250	8.75
3/4" x 1/2" x 1/2"	524462	25	250	8.25
3/4" X 1/2" X 3/4"	524470	25	250	8.39
3/4" x 3/4" x 1/2"	524488	25	250	8.39
3/4" x 3/4" x 1"	524850	10	50	14.20
1"	524504	10	50	13.49
1" x 3/4" x 1/2"	524843	10	50	14.19
1" X 3/4" X 3/4"	524512	10	50	19.94
1" x 3/4" x 1"	524835	10	50	14.19
1" X 1" X 1/2"	524520	10	50	10.69
1" x 1" x 3/4"	524538	10	50	10.76

Coupling

(Barb x Barb)



Dimension	Item	STD/ PACK	Carton	List Price
1/2"	524561	25	250	8.60
3/4"	524579	25	250	4.46
3/4" x 1/2"	524587	25	250	3.74
1"	524603	10	50	6.60
1" x 3/4"	524595	10	50	5.89

Coupling

(Pex Barb x Poly-B Barb)



Dimension	Item	STD/ PACK	Carton	List Price
1/2"	524546	25	250	8.60
3/4"	524553	25	250	9.20
1"	524900	10	50	42.82

Elbow 90°

(Barb x Barb)



Dimension	Item	STD/ PACK	Carton	List Price
1/2"	524363	25	250	3.37
3/4"	524371	25	250	5.74
3/4" x 1/2"	524389	25	250	8.07
3/4" x 1"	524405	10	50	10.56
1"	524397	10	50	10.56

Sweat Adapter

(Barb x Male)



Dimension	Item	STD/ PACK	Carton	List Price
1/2"	524645	25	250	3.08
3/4"	524652	25	250	4.81
3/4" x 1/2"	524751	25	250	5.23
1"	524660	10	50	5.23

Elbow 90°

(Barb x MPT)



Dimension	Item	STD/ PACK	Carton	List Price
1/2"	524678	10	50	12.65
3/4"	524827	25	100	14.19

Sweat Adapter

(Barb x Female)



Dimension	Item	STD/ PACK	Carton	List Price
1/2"	524140	25	250	3.08
3/4"	524157	25	250	5.24
1"	524165	10	50	8.75
1" x 3/4"	524173	10	50	29.96

Elbow 90°

(Female Sweat x Pex Barb)



Dimension	Item	STD/ PACK	Carton	List Price
1/2"	524801	25	250	2.81
3/4"	524819	25	250	3.91

Elbow 90°

(Male Sweat x Pex Barb)



Dimension	Item	STD/ PACK	Carton	List Price
1/2"	524777	25	250	2.81
3/4"	524785	25	250	3.91

Male Adapter

(Barb x MPT)



Dimension	Item	STD/ PACK	Carton	List Price
1/2"	524181	25	250	5.95
1/2" x 3/4"	524207	25	250	15.79
3/4"	524215	25	250	8.68
3/4" x 1/2"	524223	25	250	11.19
3/4" x 1"	524983	10	50	26.88
1"	524231	10	50	15.79
1" x 3/4"	524249	10	50	15.79

Wing Elbow

(Barb x FPT)

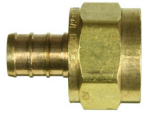


Dimension	Item	STD/ PACK	Carton	List Price
1/2"	524322	25	100	13.64
3/4"	524348	25	100	23.32
3/4" x 1/2"	524330	25	100	23.32

Fittings

No Lead Brass Fittings

ASTM F1807



Female Adapter

(Barb X FPT)

Dimension	Item	STD/ PACK	Carton	List Price
3/8" x 1/2"	524256	25	250	20.11
1/2"	524264	25	250	5.95
1/2" x 3/4"	524306	25	250	14.71
3/4"	524272	25	250	8.03
3/4" x 1/2"	524280	25	250	14.71
3/4" Barb x Swivel	524314	25	250	14.19
3/4" x 1"	524355	10	50	32.78
1"	524991	10	50	20.80



Swivel Adapter

(Barb X NPSM)

Dimension	Item	STD/ PACK	Carton	List Price
1/2" x 1/2"	524769	25	250	4.83



Plug (Barb)

Dimension	Item	STD/ PACK	Carton	List Price
1/2"	524611	25	250	2.30
3/4"	524629	25	250	3.80
1"	524637	10	50	11.47



Swivel Adapter

(Barb X NPSM Swivel 90°)

Dimension	Item	STD/ PACK	Carton	List Price
1/2" x 90°	524793	25	250	4.90

No Lead Stops & Valves

Valves



Barb x Hose (Handles may vary)

Dimension	Item	STD/ PACK	Carton	List Price
1/2" Angle/Brass	524728	25	100	28.67

"Push-Fit" 1/4 Turn Ball Valve

For use with PEX, CPVC CTS and Copper Tubing.

Ideal for adding a new line to an existing line by tapping into a 1/2" nominal CTS line (PEX, CPVC or Copper).



Dimension	Item	STD/ PACK	Carton	List Price
1/2" Push-Fit x 1/2" Push-Fit x 1/4" O.D. Compression	524868	10	100	31.73

Stops



Barb x Compression

Dimension	Item	STD/ PACK	Carton	List Price
1/2" x 3/8" Angle/Chrome	524686	25	100	26.59

Icemaker Installation Kit

Can also be used for Hot and Cold Water Dispensers or Humidifiers.

Includes 1/2" "Push-Fit" quarter turn ball valve.

All you need in one kit!



Dimension	Item	STD/ PACK	Carton	List Price
Icemaker Installation Kit	181214	6	6	40.52



Package Contains:
 1 1/8" X 25' Bowpex Pipe (Coil)
 1 Push-Fit 1/2 Turn Ball Valve
 1 Disconnect Clip (1/2")
 1 Chrome Plated Compression Nut (Extra)
 1 Copper Compression Sleeve
 2 Plastic Ferrules

Valves

Barb x Barb



Dimension	Item	STD/ PACK	Carton	List Price
1/2" Straight/ Brass	524702	25	100	24.09
3/4" Straight/ Brass	524710	25	100	29.49

Copper Elbows & Manifolds

ASTM F1807

Stub Out Elbow

Without Support



Dimension	Item	Carton	List Price
1/2" BARB x 3-1/2" x 6"	*540807	25	13.52
1/2" BARB x 3-1/2" x 8"	*540997	25	15.35

Stub Out Elbow

With Support



Dimension	Item	Carton	List Price
1/2" BARB x 3-1/2" x 6"	*540815	25	18.83
1/2" BARB x 3-1/2" x 8"	*541011	25	20.67
3/4" BARB x 4-1/2" x 8"	*541201	25	33.13

Tub Valve Adapter

1/2 Barb x Sweat



Dimension	Item	Carton	List Price
1/2"	*510818	25	13.36

*Not NSF Listed

Copper Manifolds

For PEX Plumbing and Heating Systems

All models have 1" nominal type "L" Copper Trunk and 1/2" PEX Barb connections.

Branches	Dimension	Item	Carton	List Price
4 (1/2")	3/4" Barb x Closed End	*540922	25	112.78
4 (1/2")	3/4" Sweat Male x Closed End	*541029	25	112.78
5 (1/2")	3/4" Barb x Closed End	*540930	25	126.53
6 (1/2")	3/4" Barb x Closed End	*540948	25	95.23
6 (1/2")	3/4" Sweat Male x Closed End	*541037	25	143.24
8 (1/2")	3/4" Barb x Closed End	*540955	25	114.31
8 (1/2")	3/4" Sweat Male x Closed End	*541052	25	185.67
9 (1/2")	3/4" Barb x Closed End	*540963	25	211.95
9 (1/2")	3/4" Sweat Male x Closed End	*541060	25	212.19
10 (1/2")	3/4" Barb x Closed End	*540971	25	132.05
12 (1/2")	3/4" Barb x Closed End	*540989	25	263.93



Rings & Sleeves

Metallic Crimp Rings

(Copper)



Dimension	Item	STD/ PACK	Carton	List Price
1/2"	510172	100	1000	.67
3/4"	510180	100	500	.75
1"	510198	100	500	1.49

Stainless Steel Press Sleeves



Dimension	Item	STD/ PACK	Carton	List Price
1/2"	511808	100	1000	1.20
3/4"	511816	100	600	1.32
1"	511824	50	350	1.73

Tools

Tools

For Metallic Crimp Rings

Compact Crimp Tools (Angle)

(Crimp Gauge Included)



Dimension	Item	STD/ PACK	Carton	List Price
1/2"	563734	2	10	183.40
3/4"	563411	2	10	192.90
1/2" & 3/4" Combo	563916	2	10	252.95
1"	565283	1	10	252.95

Crimp Tools

(Crimp Gauge Included)



Dimension	Item	STD/ PACK	Carton	List Price
1/2"	564518	2	10	177.09
3/4"	564617	2	10	177.09
1"	560755	1	10	202.38
1/2" & 3/4" Combo	564286	2	10	196.03

Pex Ring Cutter



Dimension	Item	STD/ PACK	Carton	List Price
1/2" to 1"	563742	1	10	99.61

Mini Crimp Tool

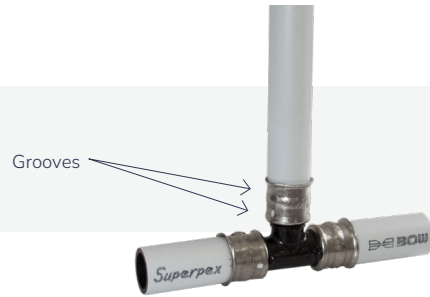


Dimension	Item	STD/ PACK	Carton	List Price
3/8" to 1"	564351	3	3	120.44

Tools

For Stainless Steel Sleeves

Tool forms two unique circular grooves for leak-free crimp connections



Compact Crimp Tools (Angle)

For stainless steel sleeves



Dimension	Item	STD/ PACK	Carton	List Price
1/2"	565457	1	20	183.40
3/4"	565481	1	20	192.90
1"	565572	1	10	252.95

Compact Crimp Tools

For stainless steel sleeves



Dimension	Item	STD/ PACK	Carton	List Price
1/2"	565382	1	10	177.09
3/4"	565416	1	10	177.09
1"	565440	1	10	202.38
1/2" & 3/4" Combo	565424	1	10	196.03

Go-Gauge

For stainless steel sleeves



Dimension	Item	STD/ PACK	Carton	List Price
1/2" & 3/4"	181065	1	25	22.55
1"	181073	1	10	22.55

Tools

Tube Cutter

For Pex & CPVC Tubing

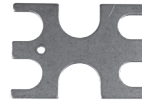


Dimension	Item	STD/ PACK	Carton	List Price
3/8" to 1" O.D.	581991	5	100	39.88



Dimension	Item	STD/ PACK	Carton	List Price
Replacement Blade	559930	1	1	13.28

Crimp Gauge "Go/No Go"



Dimension	Item	STD/ PACK	Carton	List Price
3/8", 1/2", 3/4" & 1"	560441	1	1	40.61

Pipe Hangers

J-Strap Hangers

(Nails included)



Dimension	Item	STD/ PACK	Carton	List Price
1/2"	541540	100	1000	2.26
3/4"	541649	100	1000	3.30
1"	541144	50	500	4.07

Suspension Pipe Clamps



Dimension	Item	STD/ PACK	Carton	List Price
1/2"	560110	100	1000	1.65
3/4"	560219	100	500	2.17
1"	560318	50	250	2.68

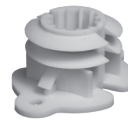
Plastic U-Strap Hangers

(Nails not included)



Dimension	Item	STD/ PACK	Carton	List Price
1/2"	541342	100	1000	1.30
3/4"	541441	100	1000	1.78

Pipe Insulators



Dimension	Item	STD/ PACK	Carton	List Price
1/2"	562660	50	250	5.57
3/4"	562876	50	250	5.59

Click Hangers



Dimension	Item	STD/ PACK	Carton	List Price
1-1/4"	562561	25	250	8.92
1-1/2"	562637	25	25	9.73

Split Tube Clamps



Dimension	Item	STD/ PACK	Carton	List Price
1/2"	560383	100	1000	3.95
3/4"	561514	100	500	4.42
1-1/4"	561936	25	250	9.73
1-1/2"	562017	25	250	13.76
2"	562116	50	250	33.50



Potable & Hydronic Pex Systems

Conditions of sales

In addition to the General Terms and Conditions of Sale found on our website, <https://www.bow-group.com/terms-and-conditions>, the following also applies to all sales of our Wavin products:

Freight

Freight is prepaid on fittings orders totaling \$2500.00 net, on orders including pipe coils totaling \$3500.00 net, and on orders including pipe lengths totaling \$4000.00 net.

All products except ABS Pipe may be combined.

Minimum Order

The minimum order is \$300.00 net.



25 Year Limited Warranty

Subject to the conditions and limitations in this Limited Warranty, BOW guarantees its BOW SUPERPEX, OXYPEX, BOWPEX, OXYPERT pipe, as well as its Polyalloy insert fittings, against defects resulting from faulty manufacturing for 25 years from the initial date of sale by BOW. BOW will not be liable for damages caused by raw materials or component defect failures.

Defects and failures must be reported to BOW within 30 days after such failure occurs. The claimant under this Limited Warranty will be required to return the product to BOW at claimant's expense for analysis by BOW. If the conditions of this Limited Warranty are met, BOW will ship, free of charge and freight prepaid, a quantity of product equal to the failed product or will reimburse the purchase price of the failed product at BOW's option. In no case, will claims for labor charges, consequential property damage or personal injury be honored.

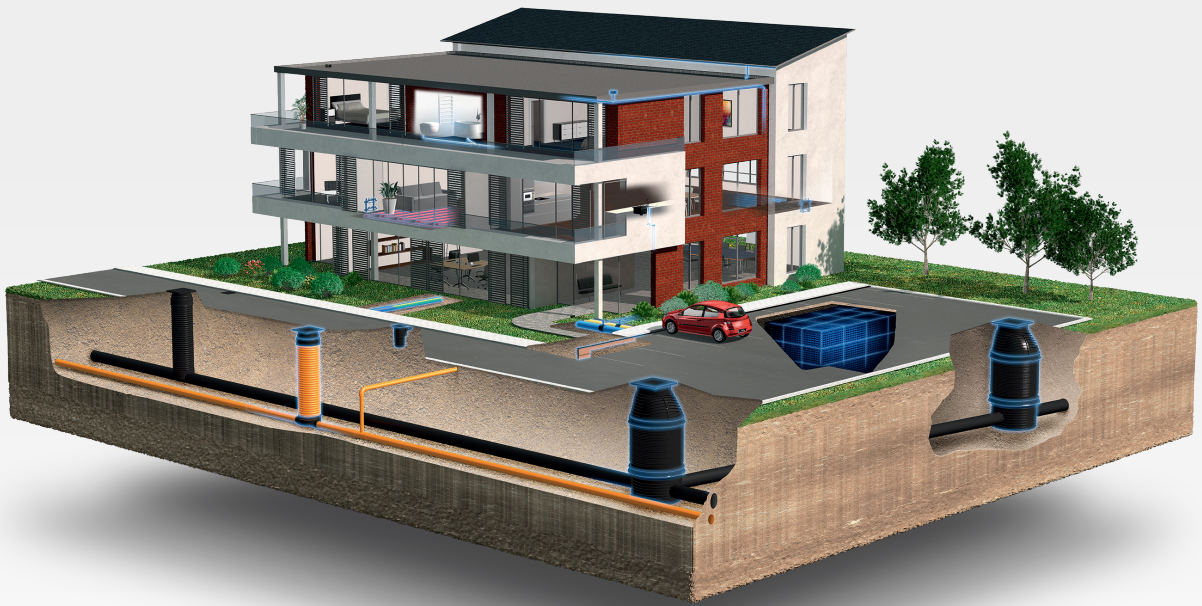
This Warranty is the only Warranty made by BOW and is expressly in lieu of all other warranties expressed by anyone or implied, including implied warranties of merchantability or fitness for a particular purpose.

The Limited Warranty will only apply:

1. If the product is installed in accordance with good plumbing and heating practices, applicable code requirements and BOW's current published installation instructions and,
2. If the product is not misused, abused, kinked, mishandled, damaged, improperly stored, or improperly exposed to UV or exposed to excessive heat, cold or pressure or incompatible media.

Discover our broad portfolio at wavin.us

- Water management
- Heating and cooling
- Water and gas distribution
- Waste water drainage



Wavin is part of Orbia, a community of companies working together to tackle some of the world's most complex challenges. We are bound by a common purpose: To Advance Life Around the World.



Wavin operates a programme of continuous product development, and therefore reserves the right to modify or amend the specification of their products without notice. All information in this publication is given in good faith, and believed to be correct at the time of going to press. However, no responsibility can be accepted for any errors, omissions or incorrect assumptions.

Wavin 950 Winter Street, South Entrance 1st Floor, Waltham, MA 02451, United States | 5700 Côte de Liesse Montréal, QC H4T 1B1
Phone CAN 514-735-7585 / 1800-561-1169 | US 514-735-3632 / 1800-763-3632 |
E-mail customer.service@orbia.com | wavin.us | wavin.ca

© 2026 Wavin Wavin reserves the right to make alterations without prior notice. Due to continuous product development, changes in technical specifications may change. Installation must comply with the installation instructions.